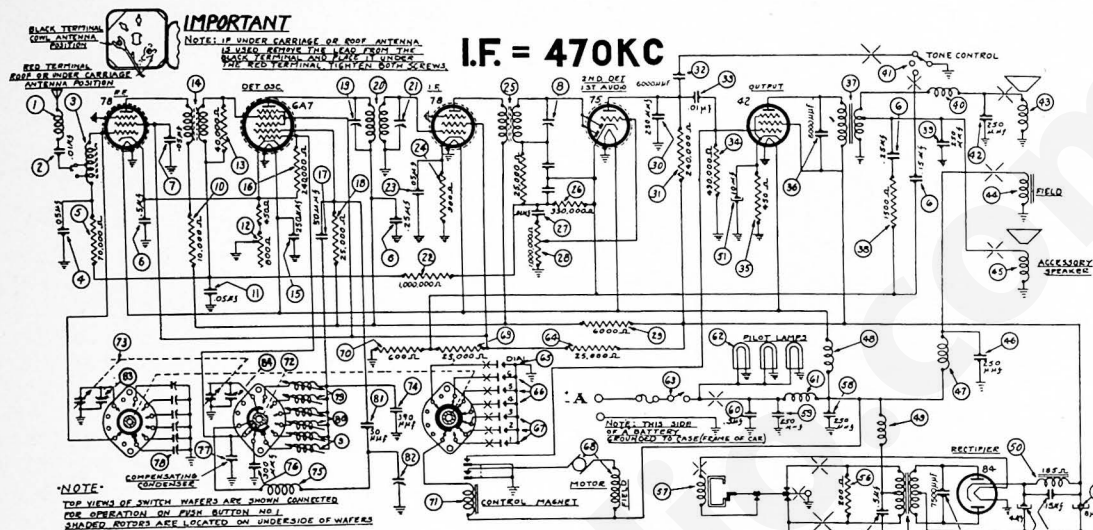


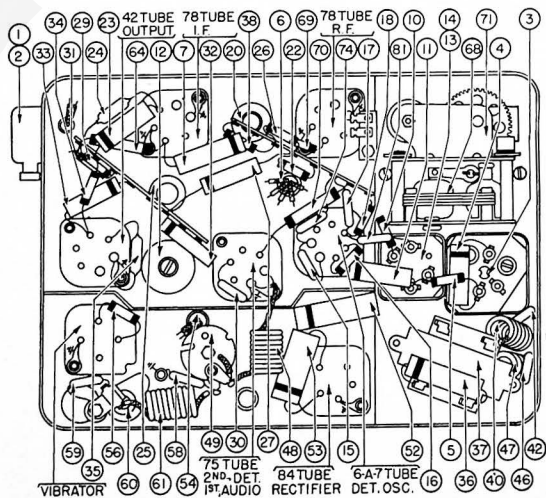
MODEL P-1630



Aligning Procedure will be found on page 173.

PARTS LIST

No.	Description	Part No.	No.	Description	Part No.
1	Antenna Choke	32-1956	62	Condenser (250 mmfd.)	30-1032
2	Condenser (.01 mfd.)	61-0014	63	Cone & Voice Coil	91-0047
3	Antenna Transformer	65-0008	64	Field Coil Assembly, Not Replaceable	30-4567
4	Condenser (.05 mfd.)	30-4569	65	Accessory Speaker	34-1384
5	Resistor (70,000 ohms)	33-370337	66	Condenser (250 mmfd.)	30-1032
6	Condenser		67	Choke	32-2657
7	(.15-.25-.25-.5 mfd.)	61-0013	68	Filament Choke	32-1604
8	Condenser (.05 mfd.)	30-4123	69	Vibrator Choke	32-2537
9	Padder (Sec. 2nd I. F. Trans.)		70	Filter Choke	65-0022
10	Oscillator Transformers		71	Filter Condenser	
11	(High Freq.)	65-0004	72	(4-8-10 mfd.)	61-0012
12	Resistor (10,000 ohms)	33-310337	73	Condenser (.15 mfd.)	30-4571
13	Condenser (.05 mfd.)	30-4444	74	Condenser (7,500 mmfd.)	30-4567
14	Sensitivity Control		75	Power Transformer	65-0016
15	(1,250 ohms)	33-5264-4	76	Condenser (.5 mfd.)	30-4563
16	Resistor (40,000 ohms)	33-340337	77	Resistor (200 ohms)	33-120337
17	R. F. Transformers	65-0009	78	Vibrator	41-3170
18	Condenser (250 mmfd.)	30-1032	79	Condenser (250 mmfd.)	30-1032
19	Resistor (240,000 ohms)	33-424337	80	Condenser (250 mmfd.)	30-1032
20	Condenser (.50 mfd.)	30-1101	81	Condenser (.5 mfd.)	30-4474
21	Resistor (25,000 ohms)	33-325337	82	"A" Choke	32-1044
22	Padder (Pri. 1st I. F. Trans.)		83	Pilot Lamp	34-2040
23	1st I. F. Transformer	65-0002	84	On-Off Switch	85-0009
24	Padder (Sec. 1st I. F. Trans.)		85	Resistor (25,000 ohms)	33-325437
25	Resistor (1,000,000 ohms)	33-510337	86	Padder & Bracket Assembly	77-0017
26	Condenser (.05 mfd.)	30-4569	87	Push Button Switch	77-0024
27	Resistor (900 ohms)	33-190438	88	Push Button Switch	77-0024
28	Second I. F. Transformer	65-0003	89	Motor	83-0001
29	Resistor (330,000 ohms)	33-433337	90	Motor (25,000 ohms)	33-325337
30	Condenser (.01 mfd.)	30-1479	91	Resistor (600 ohms)	33-160438
31	Volume Control		92	Motor & Relay Assembly	77-0178
32	(1,000,000 ohms)	67-0002	93	Switch Mechanism Assembly	77-0034
33	Resistor (6,000 ohms)	33-260337	94	Tuning Condenser	63-0003
34	Condenser (250 mmfd.)	30-1032	95	Silver Cap Condenser	
35	Resistor (240,000 ohms)	33-424337	96	(300 mmfd.)	61-0031
36	Condenser (6,000 mmfd.)	30-4504	97	Oscillator Transformer	65-0007
37	Condenser (.01 mfd.)	30-4501	98	Silver Cap Condenser	
38	Resistor (400,000 ohms)	33-449337	99	(300 mmfd.)	61-0003
39	Resistor (450 ohms)	33-145438	100	Thermel Compensating	
40	Condenser (6,000 mmfd.)	30-4024	101	Condenser	61-0011
41	Output Transformer	65-0024	102	Antenna Padders	77-0017
42	Resistor (1,500 ohms)	33-215337	103	Oscillator Transformer	
43	Condenser (250 mmfd.)	30-1032	104	(Low Freq.)	65-0006
44	Choke	32-1374	105	Oscillator Transformer	
45	Tone Control Switch	77-0026	106	(Medium Freq.)	85-0005



No.	Description	Part No.	No.	Description	Part No.
107	Condenser (50 mmfd.)	30-1101	111	Return to Dial Switch	77-0025
108	Low Frequency Padder	31-6230	112	Tone Control Switch	77-0026
109	First Padder on Tun. Cond.		113	On-Off Switch	85-0000
110	Second Padder on Tun. Cond.		114	Tuning & Volume Knob	27-4687
111	Interference Condenser	30-4007	115	Knob Base	28-4181
112	Interference Condenser	30-4475	116	"T" Bolt (Rec. Mtg.)	28-6208
113	Distributor Resistor	33-1196	117	Nuts (Rec. Mtg.)	W518
114	Push Buttons	85-0027	118	Call Letter Kit	81-0018